

There are 3 new breakout signals.

## TECH CHARTS ALERT

### GOLD RESOURCE CORP (GORO.K)

Gold Resource Corporation is a mining company. It is a gold and silver producer, developer and explorer with operations in Oaxaca, Mexico and Nevada. The stock is listed on the New York Stock Exchange. Price chart formed a 4 month-long rectangle with the horizontal boundary acting as strong resistance at 4.50 levels. The horizontal boundary was tested several times over the course of the chart pattern. The daily close above 4.63 levels confirmed the breakout from the 4 month-long rectangle with the possible chart pattern price target of 5.45 levels. ([Learn more: Video Tutorial](#))

RIC: GORO.K  
EXCHANGE: NYSE  
SECTOR: BASIC MATERIALS  
DAILY SCALE

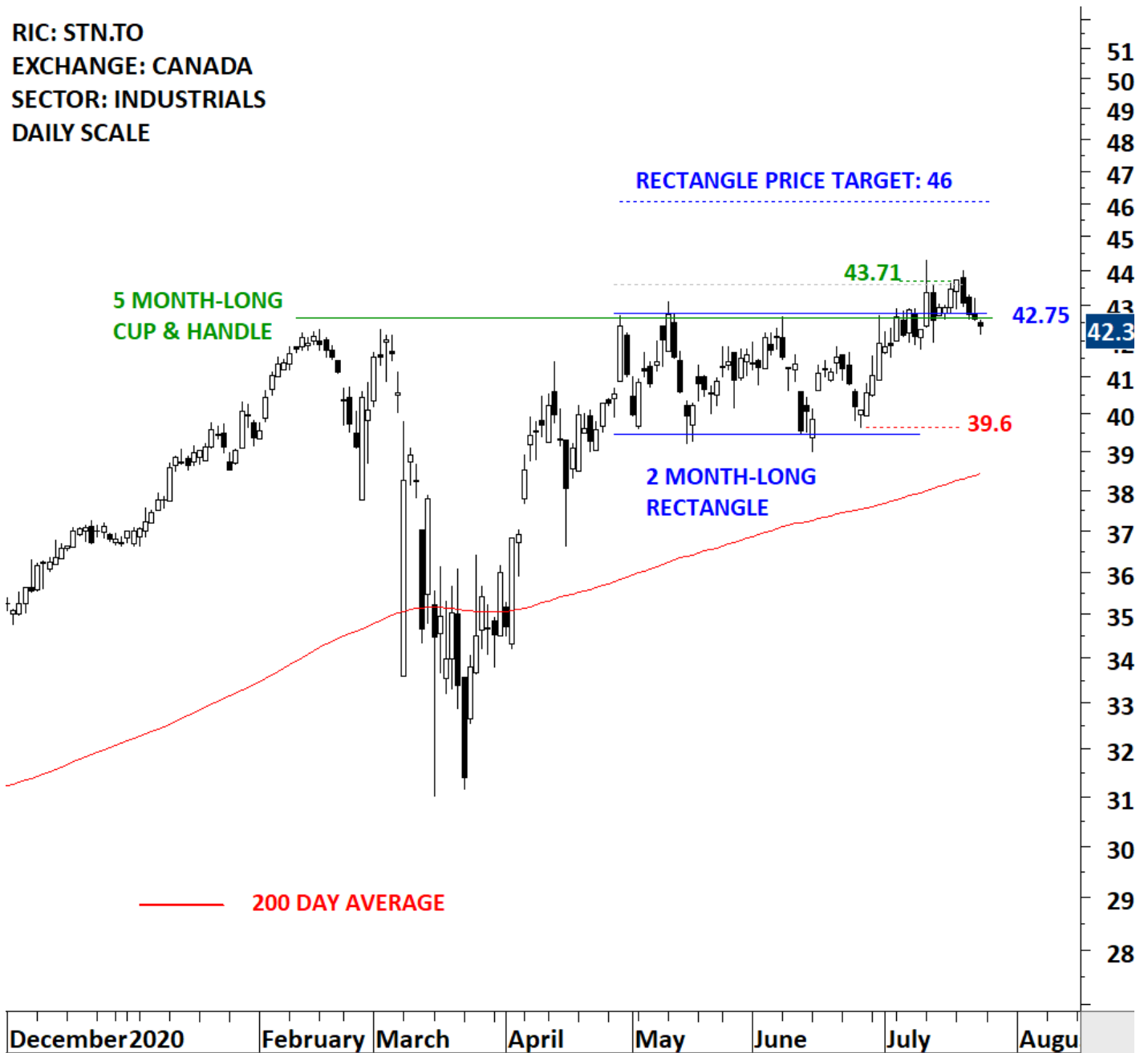


### STANTEC INC (STN.TO)

Stantec Inc. is a provider of professional services in the area of infrastructure and facilities for clients in the public and private sectors. The stock is listed on the Toronto Stock Exchange. Price

chart formed a 2 month-long rectangle with the horizontal boundary acting as strong resistance at 42.75 levels. The horizontal boundary was tested several times over the course of the chart pattern. The daily close above 43.60 levels confirmed the breakout from the 2 month-long rectangle with the possible chart pattern price target of 46.00 levels. ([Learn more: Video Tutorial](#))

**RIC: STN.TO**  
**EXCHANGE: CANADA**  
**SECTOR: INDUSTRIALS**  
**DAILY SCALE**



### ADVANCED MICRO DEVICES INC (AMD.O)

Advanced Micro Devices, Inc. is a global semiconductor company. The Company is engaged in offering x86 microprocessors, as standalone devices or as incorporated into an accelerated processing unit (APU), chipsets, discrete graphics processing units (GPUs) and professional graphics, and server and embedded processors and semi-custom System-on-Chip (SoC) products and technology for game consoles. The stock is listed on the Nasdaq Stock Exchange. Price chart formed a 4 month-long cup & handle with the horizontal boundary acting as strong resistance at 58.5 levels. The horizontal boundary was tested several times over the course of the chart pattern. The daily close above 60.2 levels confirmed the breakout from the 4 month-long cup & handle with the possible chart pattern price target of 77.6 levels. ([Learn more: Video Tutorial](#))

RIC: AMD.O  
EXCHANGE: NASDAQ  
SECTOR: TECHNOLOGY  
DAILY SCALE



There are 9 additions to Tech Charts watchlist.

## TECH CHARTS WATCHLIST

### AMERICAS

#### QTS REALTY TRUST INC (QTS.N) - new addition to watchlist

QTS Realty Trust, Inc. (QTS) is a provider of secure, compliant data center solutions, hybrid cloud and fully managed services. The Company owns, develops and operates carrier-neutral and multi-tenant data centers. The stock is listed on the New York Stock Exchange. Price chart formed a 3 month-long ascending triangle with the horizontal boundary acting as strong resistance at 69.00 levels. The horizontal boundary was tested several times over the course of the chart pattern. A daily close above 70.40 levels will confirm the breakout from the 3 month-long ascending triangle with the possible chart pattern price target of 77.30 levels. ([Learn more: Video Tutorial](#))

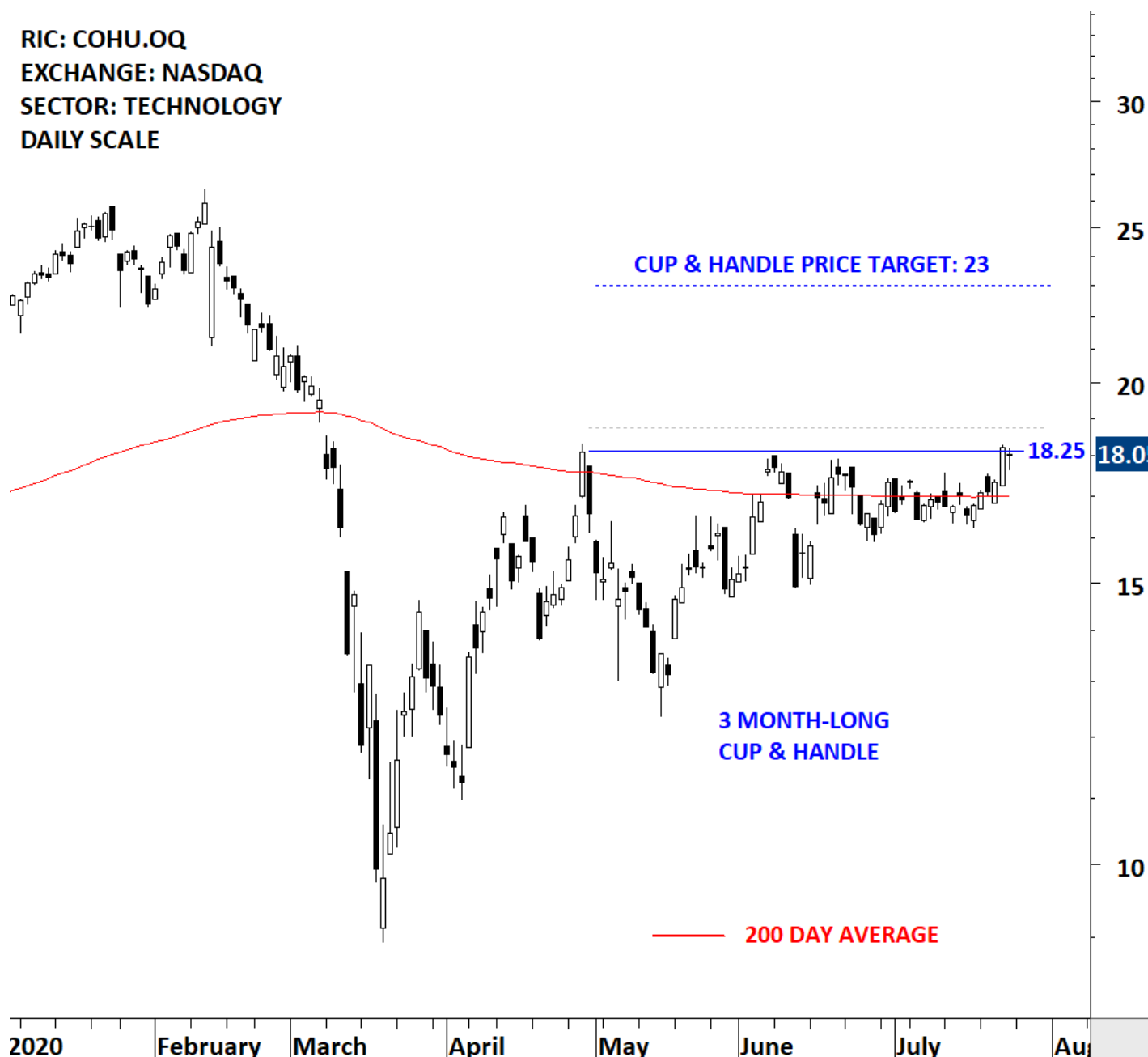
RIC: QTS.N  
EXCHANGE: NYSE  
SECTOR: FINANCIALS  
DAILY SCALE



### COHU INC (COHU.OQ) - new addition to watchlist

Cohu, Inc. is a supplier of semiconductor test and inspection handlers, micro-electro mechanical system (MEMS) test modules, test contactors and thermal sub-systems used by global semiconductor manufacturers and test subcontractors. The stock is listed on the Nasdaq Stock Exchange. Price chart formed a 3 month-long cup & handle continuation with the horizontal boundary acting as strong resistance at 18.25 levels. The horizontal boundary was tested several times over the course of the chart pattern. A daily close above 18.75 levels will confirm the breakout from the 3 month-long cup & handle continuation with the possible chart pattern price target of 23.00 levels. ([Learn more: Video Tutorial](#))

RIC: COHU.OQ  
EXCHANGE: NASDAQ  
SECTOR: TECHNOLOGY  
DAILY SCALE



### ALTRIA GROUP INC (MO.N) - new addition to watchlist

Altria Group, Inc. is a holding company. The Company's segments include smokeable products, smokeless products and wine. The stock is listed on the New York Stock Exchange. Price chart formed a 4 month-long ascending triangle with the horizontal boundary acting as strong resistance at 42.50 levels. The horizontal boundary was tested several times over the course of the chart pattern. A daily close above 43.75 levels will confirm the breakout from the 4 month-long ascending triangle with the possible chart pattern price target of 49.50 levels. Breakout can clear the 200-day average, confirming the uptrend. ([Learn more: Video Tutorial](#))

RIC: MO.N  
EXCHANGE: NYSE  
SECTOR: CONSUMER NON-CYCLICALS  
DAILY SCALE



## TARGET CORP (TGT.N)

Target Corporation (Target) is a general merchandise retailer selling products through its stores and digital channels. Its general merchandise stores offer an edited food assortment, including perishables, dry grocery, dairy and frozen items. The stock is listed on the New York Stock Exchange. Price chart formed a 2 month-long symmetrical triangle with the upper boundary acting as resistance at 123.20 levels. A daily close above 126.50 levels will confirm the breakout from the 2 month-long symmetrical triangle with the possible chart pattern price target of 135.00 levels. ([Learn more: Video Tutorial](#))

RIC: TGT.N  
EXCHANGE: NYSE  
SECTOR: CONSUMER CYCLICALS  
DAILY SCALE



## PEPSICO INC (PEP.OQ)

PepsiCo, Inc. is a global food and beverage company. The Company's portfolio of brands includes Frito-Lay, Gatorade, Pepsi-Cola, Quaker and Tropicana. The stock is listed on the Nasdaq Stock Exchange. Price chart formed a 3 month-long rectangle/channel with the upper boundary acting as strong resistance at 134.70 levels. The upper boundary was tested several times over the course of the chart pattern. A daily close above 137.40 levels will confirm the breakout from the 3 month-long rectangle/channel with the possible chart pattern price target of 143.50 levels. This week's price action was possibly an out of line movement. I will monitor this chart for renewed strength in the coming week. ([Learn more: Video Tutorial](#))

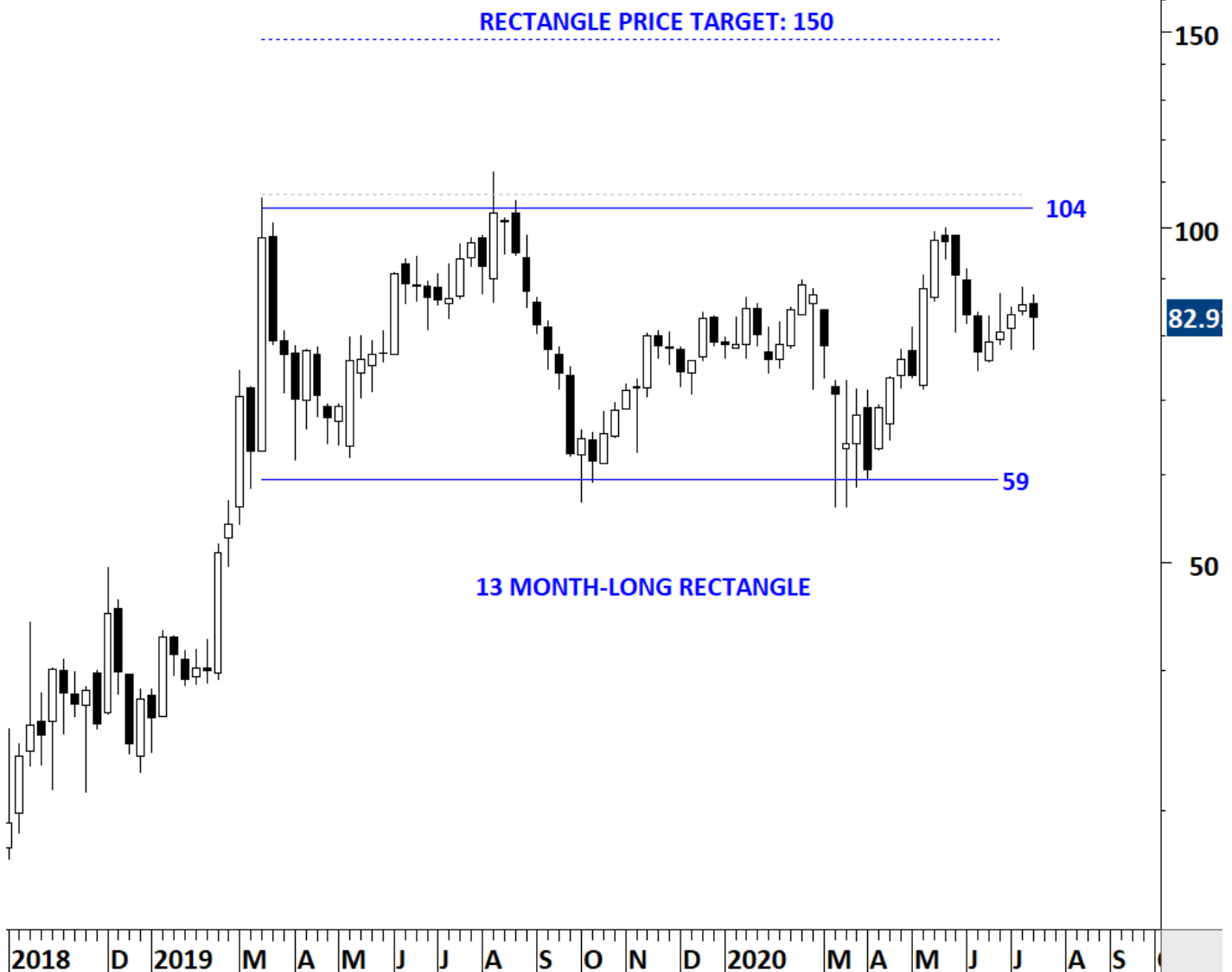
RIC: PEP.OQ  
EXCHANGE: NASDAQ  
SECTOR: CONSUMER NON-CYCLICALS  
DAILY SCALE



## GUARDANT HEALTH INC (GH.OQ)

Guardant Health, Inc. is a precision oncology company. The Company is focused on helping conquer cancer through use of its blood tests, data sets and analytics. The stock is listed on the Nasdaq Stock Exchange. Price chart formed a 13 month-long rectangle with the horizontal boundary acting as strong resistance at 104.0 levels. The horizontal boundary was tested several times over the course of the chart pattern. A daily close above 107.0 levels will confirm the breakout from the 13 month-long rectangle with the possible chart pattern price target of 150.0 levels. ([Learn more: Video Tutorial](#))

RIC: GH.OQ  
EXCHANGE: NASDAQ  
SECTOR: HEALTHCARE  
WEEKLY SCALE



## EUROPE

### PSP SWISS PROPERTY AG (PSPN.S) - new addition to watchlist

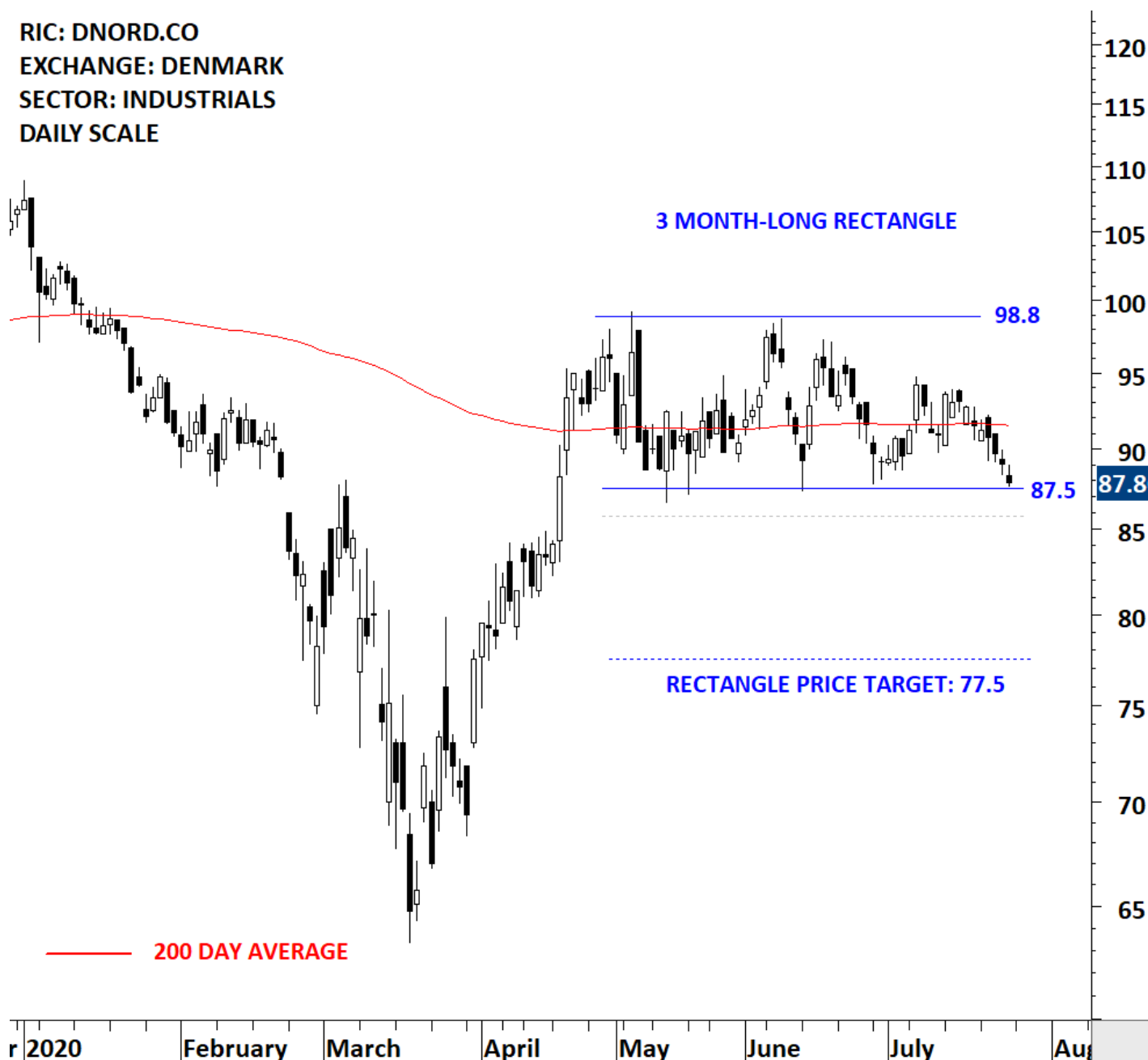
PSP Swiss Property AG is a Switzerland-based real estate holding company. The stock is listed on the Switzerland Stock Exchange. Price chart formed a 4 month-long descending triangle with the horizontal boundary acting as strong support at 102.40 levels. The horizontal boundary was tested several times over the course of the chart pattern. A daily close below 100.00 levels will confirm the breakdown from the 4 month-long descending triangle with the possible chart pattern price target of 87.00 levels. ([Learn more: Video Tutorial](#))



### DAMPSKIBSSELSKABET NORDEN A/S (DNORD.CO) - new addition to watchlist

Dampskibsselskabet Norden A/S is a Denmark-based shipping company engaged in the provision of global tramp shipping services. Its operations are divided into two business segments: Dry Cargo and Tankers. The stock is listed on the Copenhagen Stock Exchange. Price chart formed a 3 month-long rectangle with the horizontal boundary acting as strong support at 87.50 levels. The horizontal boundary was tested several times over the course of the chart pattern. A daily close below 85.80 levels will confirm the breakdown from the 3 month-long rectangle with the possible chart pattern price target of 77.50 levels. Rectangle can act as a reversal chart pattern. ([Learn more: Video Tutorial](#))

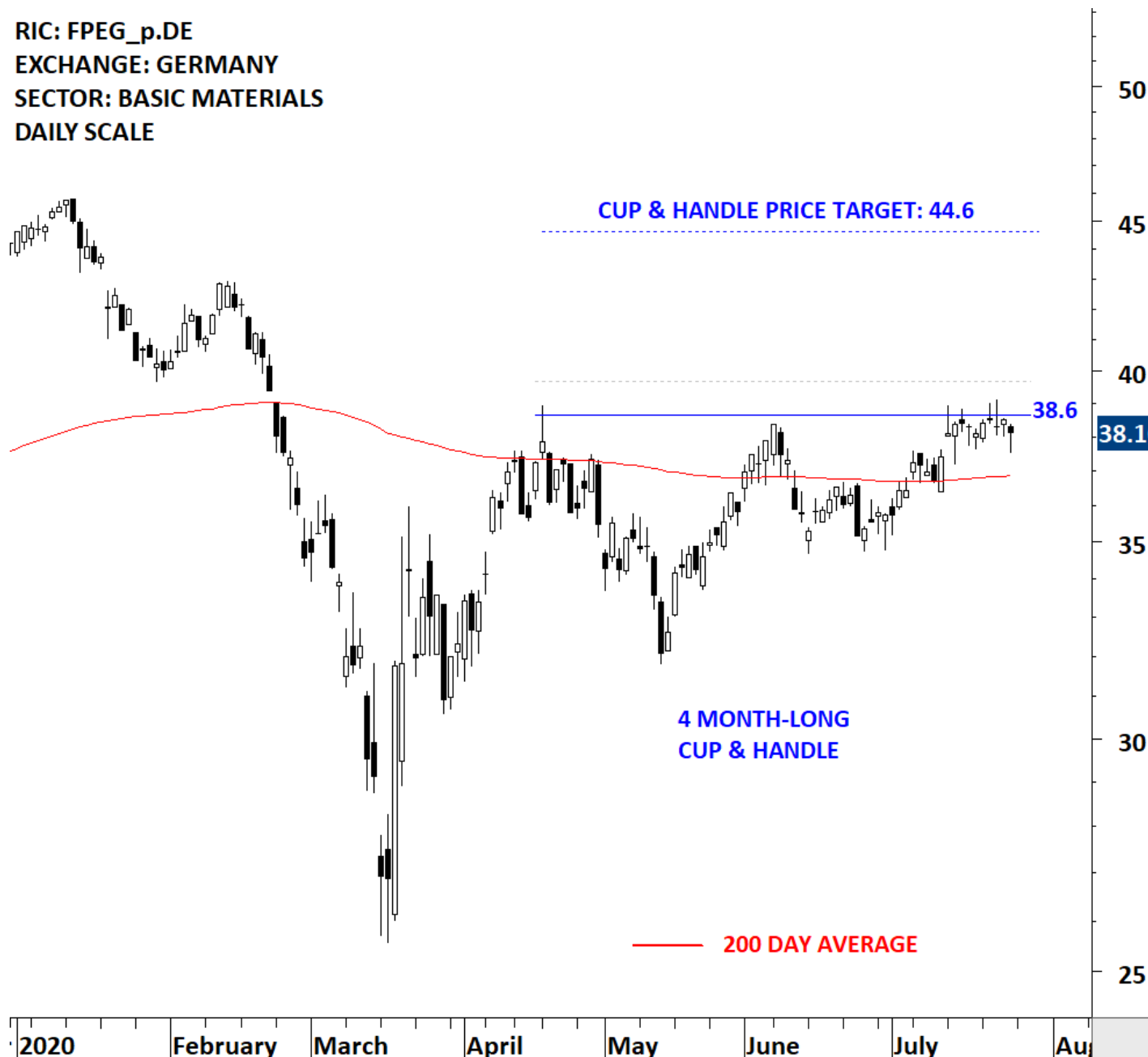
RIC: DNORD.CO  
EXCHANGE: DENMARK  
SECTOR: INDUSTRIALS  
DAILY SCALE



### FUCHS PETROLUB SE (FPEG\_p.DE) - new addition to watchlist

Fuchs Petrolub SE is a Germany-based company engaged in the development, production and supply of lubricants and related products for industry. The stock is listed on the Frankfurt Stock Exchange. Price chart formed a 4 month-long cup & handle continuation with the horizontal boundary acting as strong resistance at 38.60 levels. The horizontal boundary was tested several times over the course of the chart pattern. A daily close above 39.70 levels will confirm the breakout from the 4 month-long cup & handle continuation with the possible chart pattern price target of 44.60 levels. ([Learn more: Video Tutorial](#))

RIC: FPEG\_p.DE  
EXCHANGE: GERMANY  
SECTOR: BASIC MATERIALS  
DAILY SCALE



### SANOFI SA (SASY.PA)

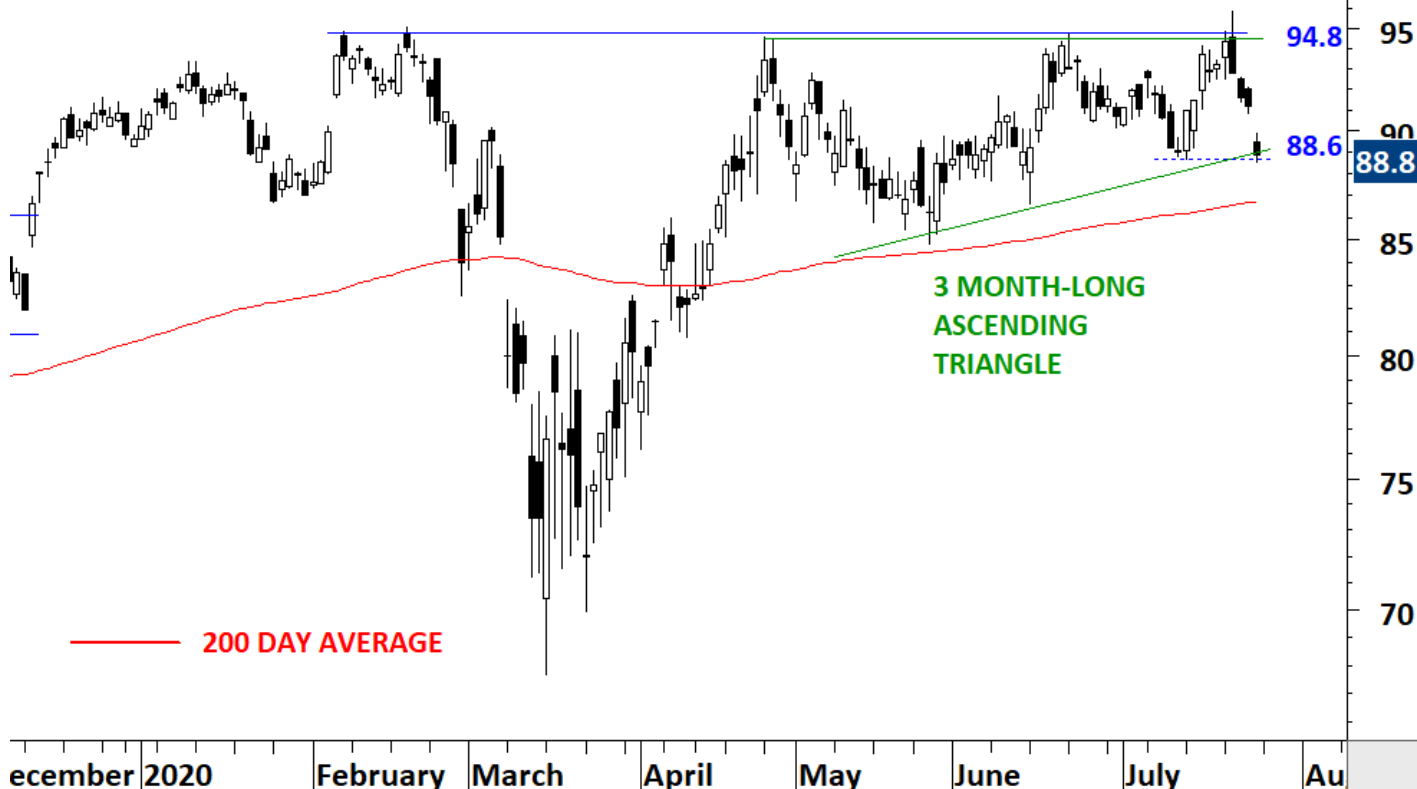
Sanofi is a healthcare company, focused on patient needs and engaged in the research, development, manufacture and marketing of therapeutic solutions. The stock is listed on the Paris Stock Exchange. Price chart formed a 6 month-long cup & handle continuation with the horizontal boundary acting as strong resistance at 94.80 levels. The horizontal boundary was tested several times over the course of the chart pattern. A daily close above 97.50 levels will confirm the breakout from the 6 month-long cup & handle continuation with the possible chart pattern price target of 116.50 levels. The handle part of the cup & handle chart pattern can be identified as a possible ascending triangle with the chart pattern price target of 105 levels. ([Learn more: Video Tutorial](#))

RIC: SASY.PA  
EXCHANGE: FRANCE  
SECTOR: HEALTHCARE  
DAILY SCALE

CUP & HANDLE PRICE TARGET: 116.5

ASCENDING TRIANGLE PRICE TARGET: 105

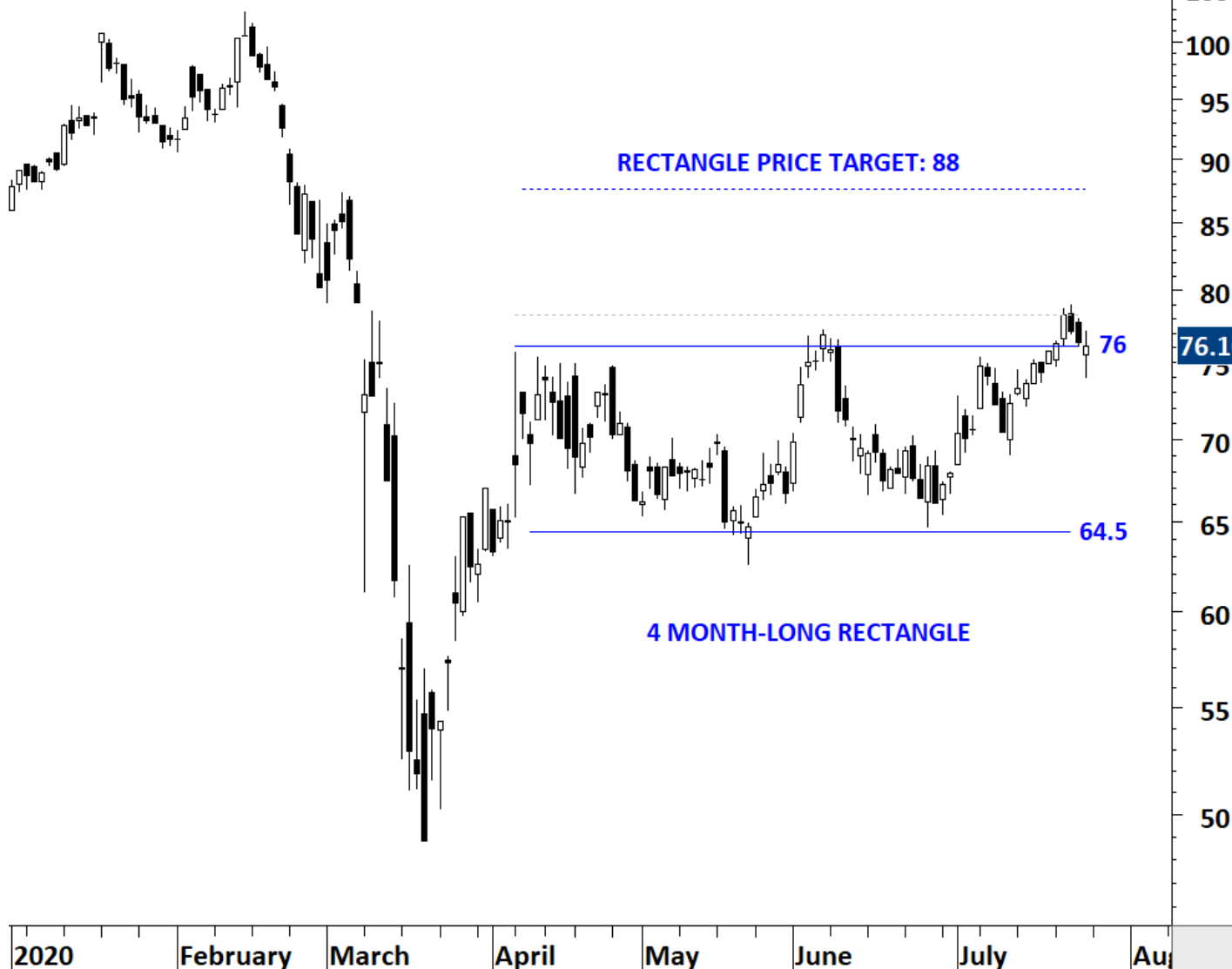
6 MONTH-LONG  
CUP & HANDLE



### GAZTRANSPORT ET TECHNIGAZ SA (GTT.PA)

Gaztransport et Technigaz SA is a France-based engineering company specialized in containment systems for the shipping and storage in cryogenic conditions of LNG (liquefied natural gas). The stock is listed on the Paris Stock Exchange. Price chart formed a 4 month-long rectangle with the horizontal boundary acting as strong resistance at 76.00 levels. The horizontal boundary was tested several times over the course of the chart pattern. A daily close above 78.30 levels will confirm the breakout from the 4 month-long rectangle with the possible chart pattern price target of 88.00 levels. I will monitor this name for renewed strength in the coming week. ([Learn more: Video Tutorial](#))

RIC: GTT.PA  
EXCHANGE: FRANCE  
SECTOR: ENERGY  
DAILY SCALE



### GALENICA AG (GALE.S)

Galenica AG, previously Galenica Sante Ltd, is a Switzerland-based healthcare services and products provider. The stock is listed on the Swiss Stock Exchange. Price chart formed a 5 month-long ascending triangle with the horizontal boundary acting as strong resistance at 71.50 levels. The horizontal boundary was tested several times over the course of the chart pattern. A daily close above 73.00 levels will confirm the breakout from the 5 month-long ascending triangle with the possible chart pattern price target of 82.70 levels. ([Learn more: Video Tutorial](#))

**RIC: GALE.S**  
**EXCHANGE: SWITZERLAND**  
**SECTOR: HEALTHCARE**  
**DAILY SCALE**

**ASCENDING TRIANGLE PRICE TARGET: 82.7**



### **DANONE SA (DANO.PA)**

Danone SA is a France-based global food and beverage company. It operates through four segments: Essential Dairy and Plant-Based Products (EDP), Waters and Specialized Nutrition, including Early Life Nutrition and Medical Nutrition. The stock is listed on the Paris Stock Exchange. Price chart formed a 3 month-long rectangle with the lower boundary acting as support at 59.70 and the upper boundary as resistance at 65 levels. The lower boundary was tested several times over the course of the chart pattern. Rectangle chart pattern can offer trading opportunity between the boundaries. Breakdown below the support at 59.7 levels can complete the chart pattern as a reversal and suggest lower levels. ([Learn more: Support & Resistance](#))

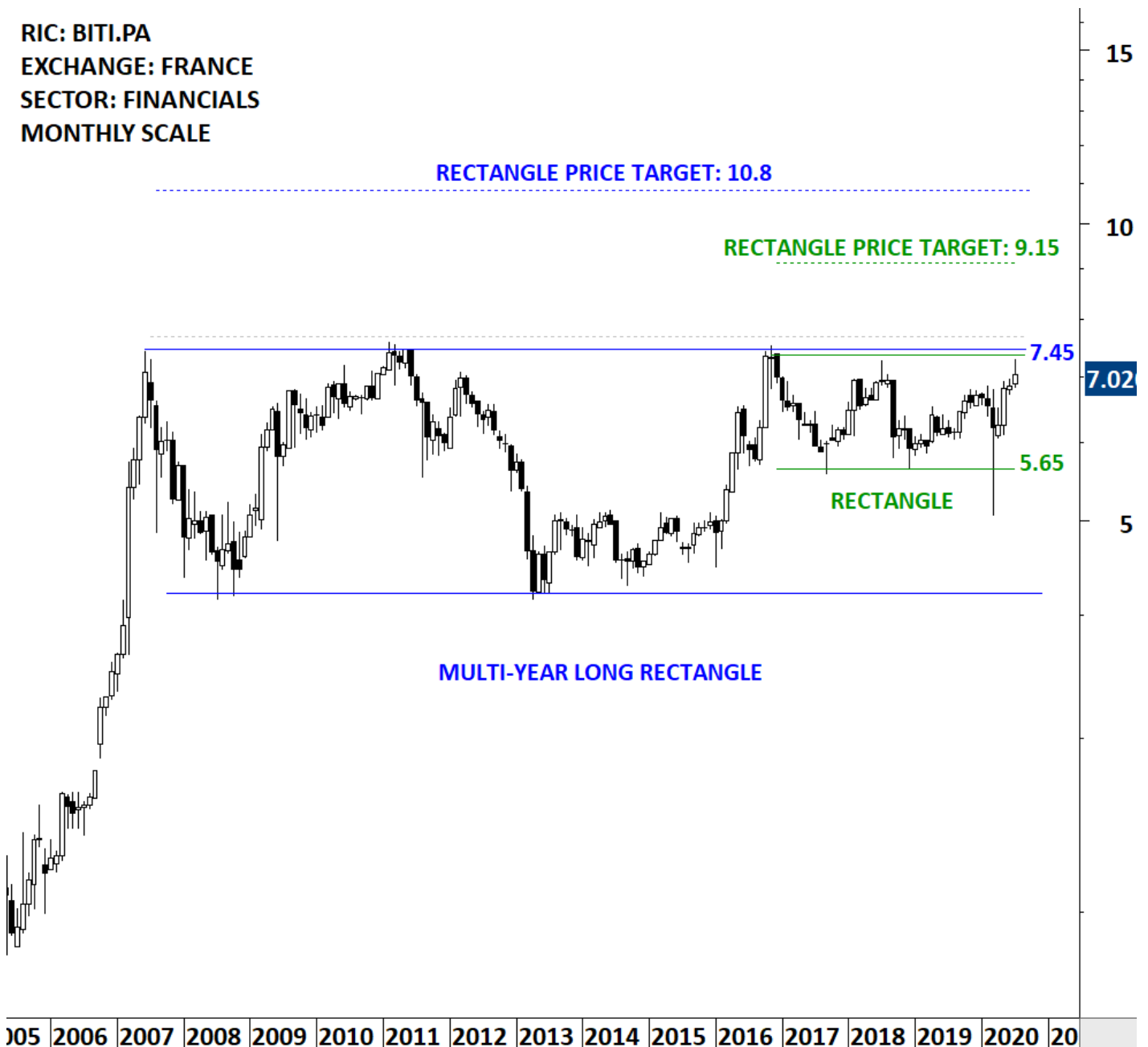
RIC: DANO.PA  
EXCHANGE: FRANCE  
SECTOR: CONSUMER NON-CYCLICALS  
DAILY SCALE



### ABC ARBITRAGE SA (BITI.PA)

ABC Arbitrage SA is a France-based company that executes arbitrage strategies on the European, American and international financial markets. The stock is listed on the Paris Stock Exchange. Price chart formed a multi year-long rectangle with the horizontal boundary acting as strong resistance at 7.45 levels. The horizontal boundary was tested several times over the course of the chart pattern. A daily close above 7.68 levels will confirm the breakout from the multi year-long rectangle with the possible chart pattern price target of 9.15 levels. The larger scale consolidation can also be identified as a possible rectangle with the price objective of 10.8 levels. ([Learn more: Video Tutorial](#))

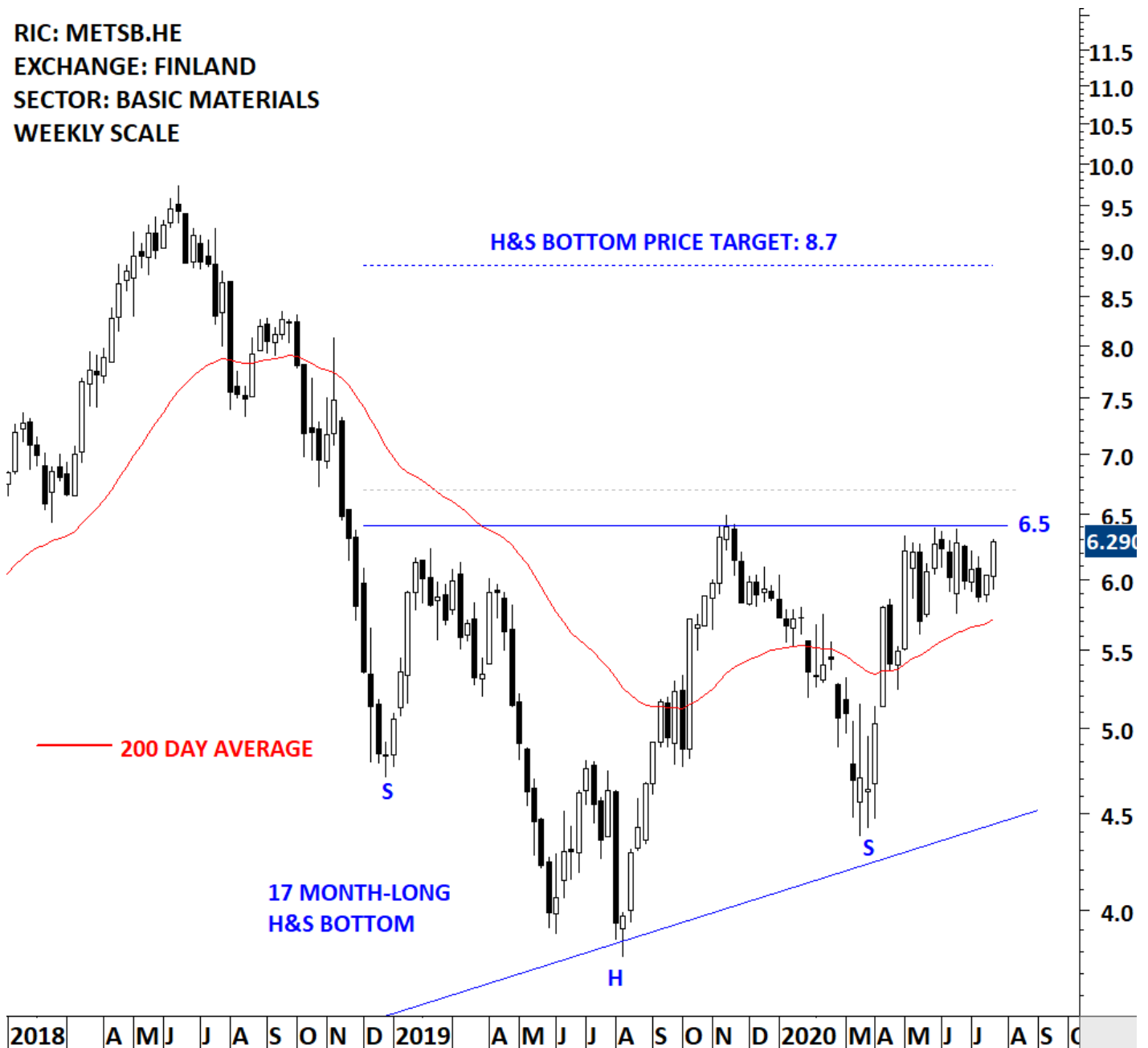
RIC: BITI.PA  
EXCHANGE: FRANCE  
SECTOR: FINANCIALS  
MONTHLY SCALE



### METSA BOARD OYJ (METS.B.HE)

Metsa Board Oyj (Metsa Board Corporation), formerly M-real Corporation, is a Finland-based company engaged in the production, marketing and sale of primary fiber paperboard and paper products. The stock is listed on the Helsinki Stock Exchange. Price chart formed a 17 month-long head and shoulder bottom with the horizontal boundary acting as strong resistance at 6.5 levels. The horizontal boundary was tested several times over the course of the chart pattern. A daily close above 6.7 levels will confirm the breakout from the 17 month-long head and shoulder bottom with the possible chart pattern price target of 8.7 levels. ([Learn more: Video Tutorial](#))

**RIC: METSB.HE**  
**EXCHANGE: FINLAND**  
**SECTOR: BASIC MATERIALS**  
**WEEKLY SCALE**



**MONCLER SPA (MONC.MI)**

Moncler SpA is an Italy-based company engaged in fashion industry. The Company designs, produces and distributes clothing and accessories through Moncler brand. The stock is listed on the Milan Stock Exchange. Price chart formed a 19 month-long rectangle with the horizontal boundary acting as strong support at 26.25 levels. Moncler had a strong rebound from the horizontal support. Over the past month the stock formed a short-term consolidation between 30.8 and 35.6 levels. The short-term consolidation can be identified as rectangle. A daily close above 36.6 levels will confirm the breakout with the possible chart pattern price target of 40.6 levels. Breakout from the rectangle can also clear the 200-day average which is acting as resistance at the same level. ([Learn more: Video Tutorial](#))

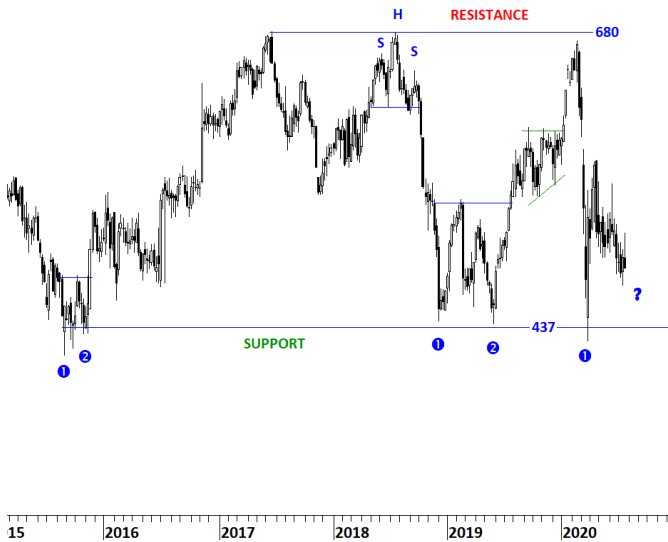
RIC: MONC.MI  
EXCHANGE: ITALY  
SECTOR: CONSUMER CYCLICALS  
DAILY SCALE



### BAE SYSTEMS PLC (BAES.L)

BAE Systems plc is a defense, aerospace and security company. The stock is listed on the London Stock Exchange. Price chart formed multi year-long consolidation with the horizontal boundary acting as strong support at 437.0 levels. The horizontal boundary was tested several times over the course of the chart pattern. Sharp sell-off from the upper boundary around 680 levels pulled the stock to 437 levels in a short period of time. The rebound was sharp. The stock might be forming the second low; the re-test. The 200-day moving average is acting as resistance at 532 levels. ([Learn more: Support & Resistance](#))

RIC: BAES.L  
EXCHANGE: UNITED KINGDOM  
SECTOR: INDUSTRIALS  
WEEKLY SCALE



## MIDDLE EAST & AFRICA

### SANKO PAZARLAMA ITHALAT IHRACAT AS (SANKO.IS) - new addition to watchlist

Sanko Pazarlama Ithalat Ihracat AS is a Turkey-based company engaged in the trade, wholesale, marketing and distribution of textile products in the domestic and foreign markets. The stock is listed on the Istanbul Stock Exchange. Price chart formed a 2 month-long rectangle with the horizontal boundary acting as strong resistance at 8.25 levels. The horizontal boundary was tested several times over the course of the chart pattern. A daily close above 8.50 levels will confirm the breakout from the 2 month-long rectangle with the possible chart pattern price target of 9.46 levels. ([Learn more: Video Tutorial](#))

RIC: SANKO.IS  
EXCHANGE: TURKEY  
SECTOR: CONSUMER CYCLICALS  
DAILY SCALE



## KLIMASAN KLIMA SANAYI VE TICARET AS (KLMSN.IS)

Klimasan Klima Sanayi ve Ticaret AS is a Turkey-based company engaged in the manufacture and marketing of industrial-type coolers and freezers. The Company's main products are soft beverage and beer coolers, ice cream and frozen food conservators, deep freezers and wine coolers. The stock is listed on the Istanbul Stock Exchange. Price chart formed a 2 month-long symmetrical triangle with the upper boundary acting as strong resistance at 17.20 levels. The upper boundary was tested several times over the course of the chart pattern. A daily close above 17.70 levels will confirm the breakout from the 2 month-long symmetrical triangle with the possible chart pattern price target of 20.20 levels. ([Learn more: Video Tutorial](#))

RIC: KLMSN.IS  
EXCHANGE: TURKEY  
SECTOR: INDUSTRIALS  
DAILY SCALE



## TUKAS GIDA SANAYI VE TICARET AS (TUKAS.IS)

Tukas Gıda Sanayi ve Ticaret AS (Tukas) is a Turkey-based food manufacturer. The stock is listed on the Istanbul Stock Exchange. Price chart formed a 4 month-long rectangle with the horizontal boundary acting as strong support at 7.80 levels. The wide trading range can offer a trading opportunity between the well-defined boundaries. As I come across well-defined consolidation ranges I featured them in the report to highlight the strong support and resistance areas. If we see a similar reversal like March 2020, recovery above the 200-day average can be the first sign of strength. ([Learn more: Support & Resistance](#))

RIC: TUKAS.IS  
EXCHANGE: TURKEY  
SECTOR: CONSUMER NON-CYCLICALS  
DAILY SCALE

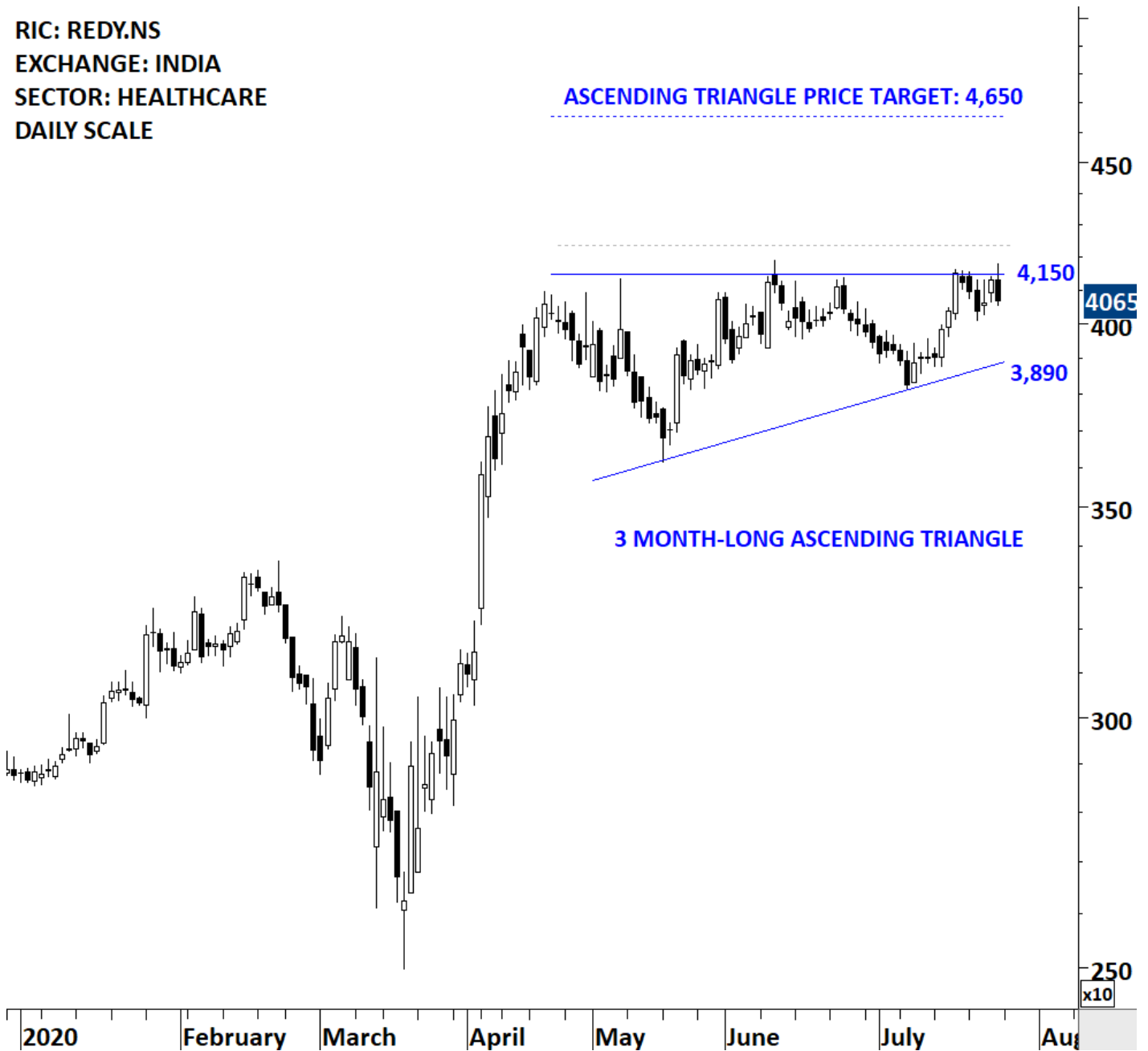


## ASIA

### DR.REDDY'S LABORATORIES LTD (REDY.NS) - new addition to watchlist

Dr. Reddy's Laboratories Limited is a pharmaceutical company that is engaged in providing medicines. The Company operates in three segments: Global Generics, Pharmaceutical Services and Active Ingredients (PSAI), and Proprietary Products. The stock is listed on the National Stock Exchange of India. Price chart formed a 3 month-long ascending triangle with the horizontal boundary acting as strong resistance at 4,150.00 levels. The horizontal boundary was tested several times over the course of the chart pattern. A daily close above 4,235.00 levels will confirm the breakout from the 3 month-long ascending triangle with the possible chart pattern price target of 4,650.00 levels. ([Learn more: Video Tutorial](#))

RIC: REDY.NS  
EXCHANGE: INDIA  
SECTOR: HEALTHCARE  
DAILY SCALE



### TOKYO GAS CO LTD (9531.T) - new addition to watchlist

TOKYO GAS CO., LTD. is a Japan-based company mainly engaged in the gas, electric power, energy related business and real estate business. The stock is listed on the Tokyo Stock Exchange. Price chart formed a 3 month-long ascending triangle with the horizontal boundary acting as strong resistance at 2,670.00 levels. The horizontal boundary was tested several times over the course of the chart pattern. A daily close above 2,725.00 levels will confirm the breakout from the 3 month-long ascending triangle with the possible chart pattern price target of 2,950.00 levels. ([Learn more: Video Tutorial](#))

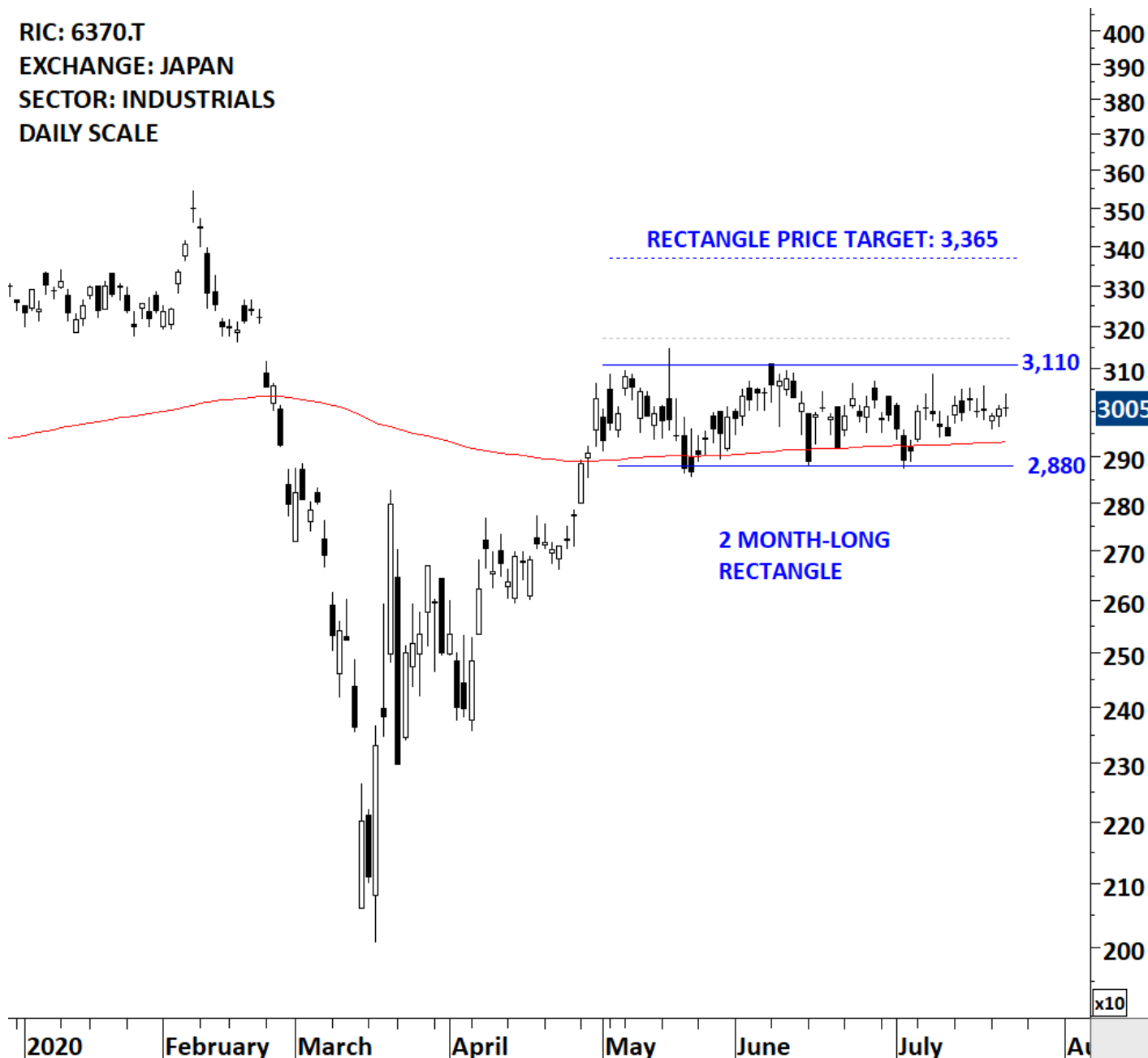
RIC: 9531.T  
EXCHANGE: JAPAN  
SECTOR: UTILITIES  
DAILY SCALE



### KURITA WATER INDUSTRIES LTD (6370.T)

Kurita Water Industries Ltd. is a Japan-based company mainly engaged in the provision of water treatment-related products, technology and maintenance services. The stock is listed on the Tokyo Stock Exchange. Price chart formed a 2 month-long rectangle with the horizontal boundary acting as strong resistance at 3,110.00 levels. The horizontal boundary was tested several times over the course of the chart pattern. A daily close above 3,170.00 levels will confirm the breakout from the 2 month-long rectangle with the possible chart pattern price target of 3,365.00 levels. ([Learn more: Video Tutorial](#))

RIC: 6370.T  
EXCHANGE: JAPAN  
SECTOR: INDUSTRIALS  
DAILY SCALE



### TREASURY WINE ESTATES LTD (TWE.AX)

Treasury Wine Estates Limited is engaged in grape growing and sourcing; wine production, and wine marketing, selling and distribution. The stock is listed on the Australia Stock Exchange. Price chart formed a 4 month-long ascending triangle with the horizontal boundary acting as strong resistance at 11.60 levels. The horizontal boundary was tested several times over the course of the chart pattern. A daily close above 11.95 levels will confirm the breakout from the 4 month-long ascending triangle with the possible chart pattern price target of 14.70 levels. The ascending triangle can act as a bottom reversal chart pattern. ([Learn more: Video Tutorial](#))

RIC: TWE.AX  
EXCHANGE: AUSTRALIA  
SECTOR: CONSUMER NON-CYCLICALS  
DAILY SCALE



### CHINA RESOURCES CEMENT HOLDINGS LTD (1313.HK)

China Resources Cement Holdings Limited is a Hong Kong-based investment holding company principally engaged in the cement and concrete businesses. The stock is listed on the Hong Kong Stock Exchange. Price chart formed a 6 month-long head and shoulder continuation with the horizontal boundary acting as strong resistance at 10.50 levels. The horizontal boundary was tested several times over the course of the chart pattern. A daily close above 10.80 levels will confirm the breakout from the 6 month-long head and shoulder continuation with the possible chart pattern price target of 13.30 levels. ([Learn more: Video Tutorial](#))

RIC: 1313.HK  
EXCHANGE: HONG KONG  
SECTOR: BASIC MATERIALS  
DAILY SCALE

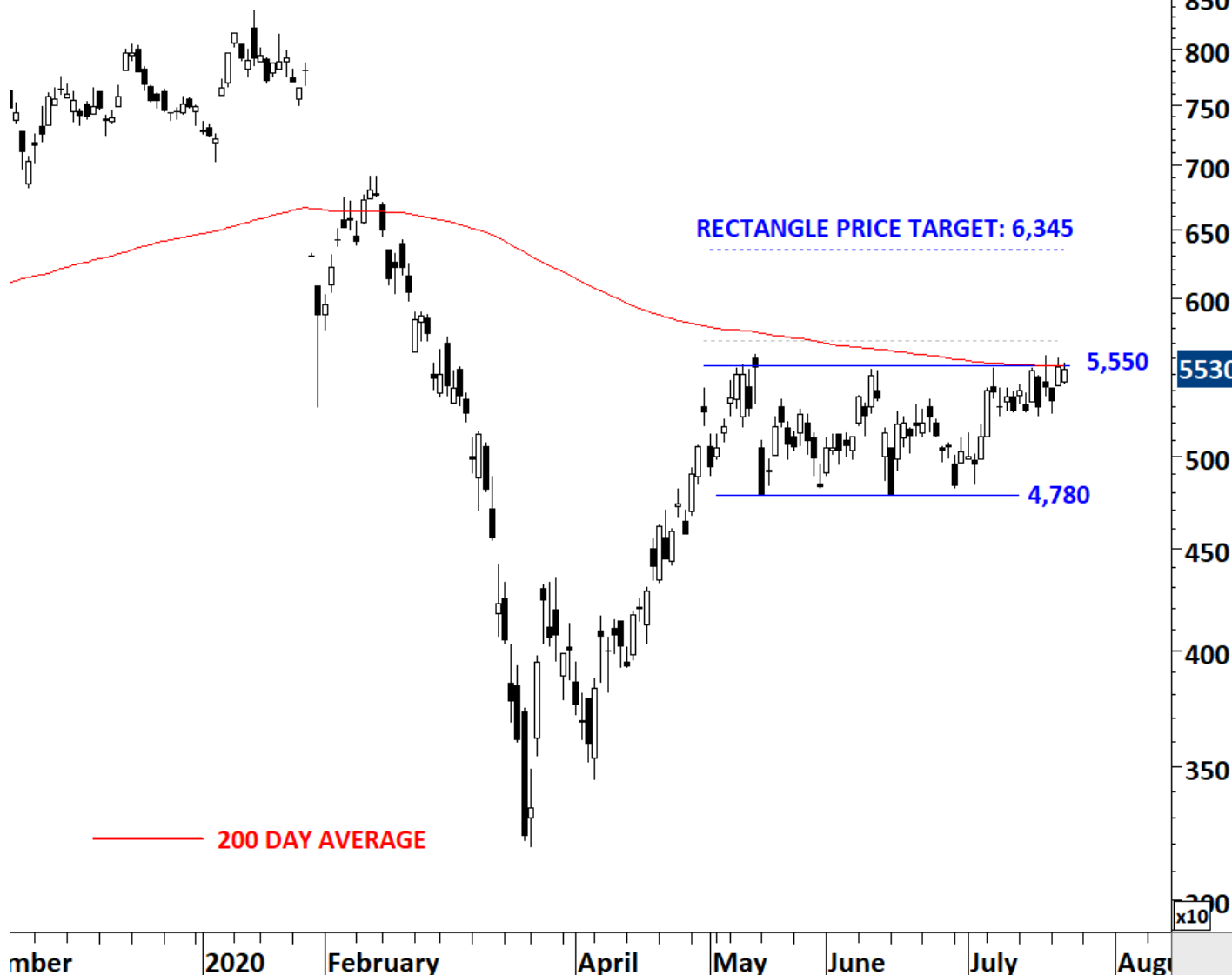
H&S CONTINUATION PRICE TARGET: 13.3



### SCREEN HOLDINGS CO LTD (7735.T)

SCREEN Holdings Co.,Ltd. is a Japan-based company mainly engaged in the manufacture and sale of semiconductor manufacturing equipment. The stock is listed on the Tokyo Stock Exchange. Price chart formed a 2 month-long rectangle with the horizontal boundary acting as strong resistance at 5,550.00 levels. The horizontal boundary was tested several times over the course of the chart pattern. A daily close above 5,715.00 levels will confirm the breakout from the 2 month-long rectangle with the possible chart pattern price target of 6,345.00 levels. ([Learn more: Video Tutorial](#))

RIC: 7735.T  
EXCHANGE: JAPAN  
SECTOR: TECHNOLOGY  
DAILY SCALE



### MEDIPAL HOLDINGS CORP (7459.T)

MEDIPAL HOLDINGS CORPORATION engages in the wholesale of pharmaceutical products, cosmetics and daily miscellaneous goods. The stock is listed on the Tokyo Stock Exchange. Price chart formed a 3 month-long rectangle with the lower boundary acting as support at 1,947 levels and the upper boundary acting as resistance at 2,190 levels. The lower boundary was tested several times over the course of the chart pattern. Rectangle chart pattern can offer trading opportunity between the boundaries. Breakdown below the support at 1,947 levels can complete the chart pattern as a reversal and suggest lower levels. ([Learn more: Support & Resistance](#)) ([Learn more: Doji candlestick](#)) ([Learn more: Bullish Engulfing](#))

**RIC: 7459.T**  
**EXCHANGE: JAPAN**  
**SECTOR: HEALTHCARE**  
**DAILY SCALE**



**TITAN COMPANY LTD (TITN.NS)**

Titan Company Limited is engaged in offering watches, jewelry and others. The Company's segments include Watches, Jewellery, Eyewear and Others. The stock is listed on the National Stock Exchange. Price chart formed a 3 month-long cup & handle continuation with the horizontal boundary acting as strong resistance at 1,040.00 levels. The horizontal boundary was tested several times over the course of the chart pattern. A daily close above 1,071.00 levels will confirm the breakout from the 3 month-long cup & handle continuation with the possible chart pattern price target of 1,240.00 levels. ([Learn more: Video Tutorial](#))

RIC: TITN.NS  
EXCHANGE: INDIA  
SECTOR: CONSUMER CYCLICALS  
DAILY SCALE



## STATE BANK OF INDIA (SBI.NS)

State Bank of India provides a range of products and services to personal, commercial enterprises, large corporates, public bodies and institutional customers. The stock is listed on the National Stock Exchange. Price chart formed a 3 month-long H&S bottom reversal with the horizontal boundary acting as strong resistance at 200.00 levels. The horizontal boundary was tested several times over the course of the chart pattern. A daily close above 206.00 levels will confirm the breakout from the 3 month-long H&S bottom reversal with the possible chart pattern price target of 245.00 levels. It is important to note that price is still below its 200-day average. The H&S bottom reversal can form at a major support. ([Learn more: Video Tutorial](#))

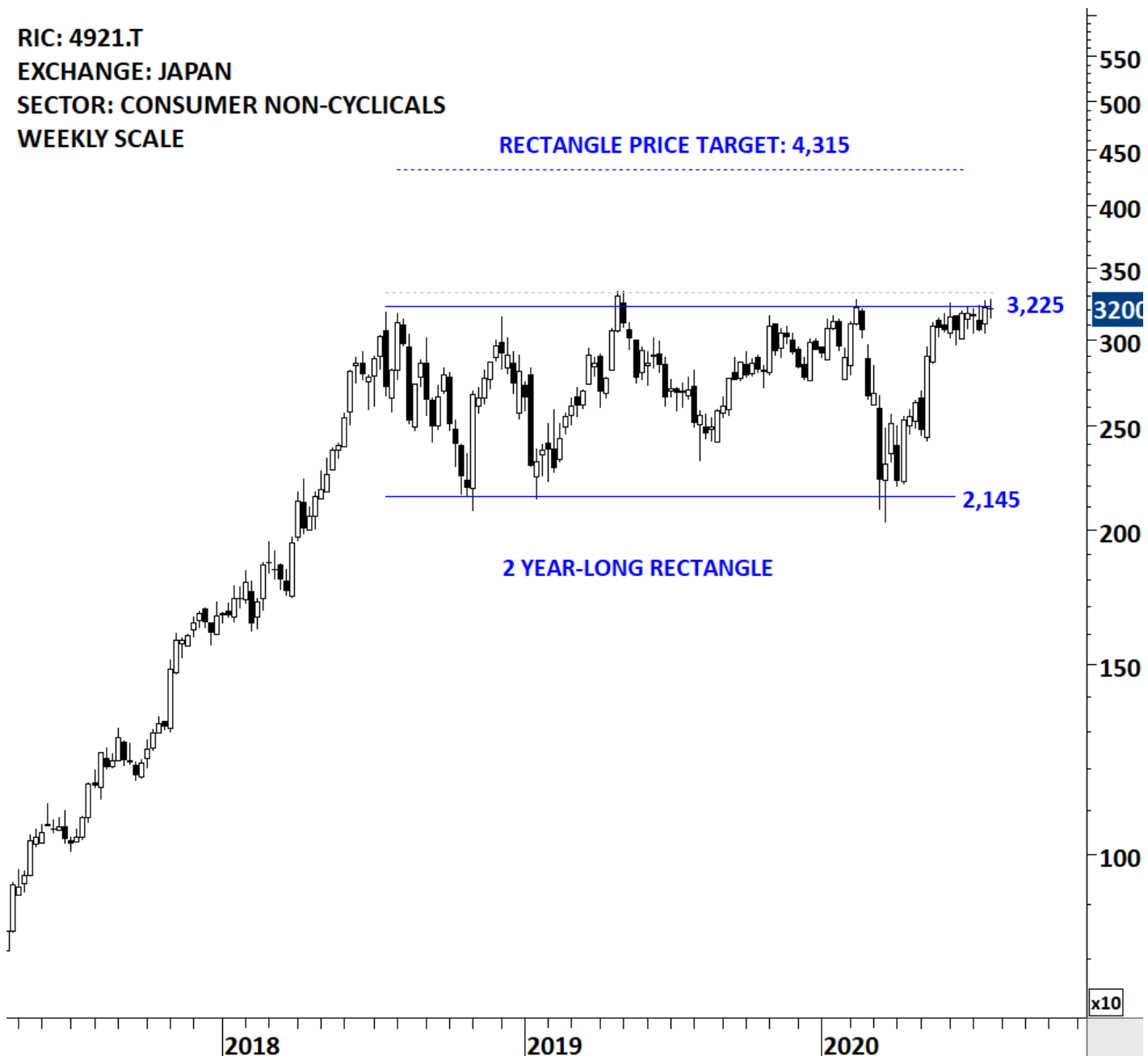
RIC: SBI.NS  
EXCHANGE: INDIA  
SECTOR: FINANCIALS  
DAILY SCALE



## FANCL CORP (4921.T)

FANCL CORPORATION is a Japan-based company principally engaged in the research, development, manufacture and sale of cosmetics and dietary supplements. The stock is listed on the Tokyo Stock Exchange. Price chart formed a 2 year-long rectangle with the horizontal boundary acting as strong resistance at 3,225.0 levels. The horizontal boundary was tested several times over the course of the chart pattern. A daily close above 3,320.0 levels will confirm the breakout from the 2 year-long rectangle with the possible chart pattern price target of 4,315.0 levels. ([Learn more: Video Tutorial](#))

RIC: 4921.T  
EXCHANGE: JAPAN  
SECTOR: CONSUMER NON-CYCLICALS  
WEEKLY SCALE



### ISHARES CHINA LARGE-CAP ETF (IZZ.AX)

iShares China Large-Cap ETF (the Fund) is an exchange-traded fund. The Fund seeks investment results that correspond generally to the price and yield performance, before fees and expenses, of the FTSE China 25 Index (the Underlying Index). The Fund's portfolio of sectors include Financials, Telecommunication, Oil & gas, Technology and Consumer goods. The ETF is listed on the Australia Stock Exchange. Price chart formed a multi year-long cup & handle continuation with the horizontal boundary acting as strong resistance at 67.00 levels. The horizontal boundary was tested several times over the course of the chart pattern. The handle part of the chart pattern is possibly a rectangle. A daily close above 69.00 levels will confirm the breakout from the multi year-long cup & handle continuation with the possible chart pattern price target of 91.00 levels. Rectangle chart pattern price target stands at 78 levels. ([Learn more: Video Tutorial](#))

RIC: IZZ.AX  
EXCHANGE: AUSTRALIA  
ISHARES CHINA LARGE CAP ETF  
MONTHLY SCALE

CUP & HANLDE PRICE TARGET: 91

RECTANGLE PRICE TARGET: 78



### INNER MONGOLIA YILI INDUSTRIAL GROUP CO LTD (600887.SS)

INNER MONGOLIA YILI INDUSTRIAL GROUP CO., LTD. is a China-based company, principally engaged in the processing, production and distribution of dairy products and mixed feedstuffs. The stock is listed on the Shanghai Stock Exchange. Price chart formed a 28 month-long cup & handle continuation with the horizontal boundary acting as strong resistance at 35.00 levels. The horizontal boundary was tested several times over the course of the chart pattern. The handle part of the cup & handle chart pattern can be identified as a rectangle. A daily close above 36.0 levels will confirm the breakout from the 28 month-long cup & handle continuation with the possible chart pattern price target of 48.0 levels. ([Learn more: Video Tutorial](#))

RIC: 600887.SS  
EXCHANGE: CHINA  
SECTOR: CONSUMER NON-CYCLICALS  
WEEKLY SCALE

CUP & HANDLE PRICE TARGET: 48



### JIANGXI COPPER CO LTD (600362.SS)

Jiangxi Copper Company Limited is a China-based company, principally engaged in the mining, smelting and processing of copper. The Company is also engaged in the extraction and processing of precious metals and dissipated metals, sulfur chemical industry business, and financial and trading businesses. The stock is listed on the Shanghai Stock Exchange. Price chart formed a multi year-long symmetrical triangle with the lower boundary acting as support at 12.6 levels. The lower boundary was tested several times over the course of the chart pattern. A daily close below 12.0 levels will confirm the breakdown from the multi year-long symmetrical triangle with the possible chart pattern price target of 5.4 levels. It is still early to discuss the possibility of symmetrical triangle acting as a bottom reversal but if we see a test of the upper boundary I will shift my focus to the bullish possibility. ([Learn more: Video Tutorial](#))

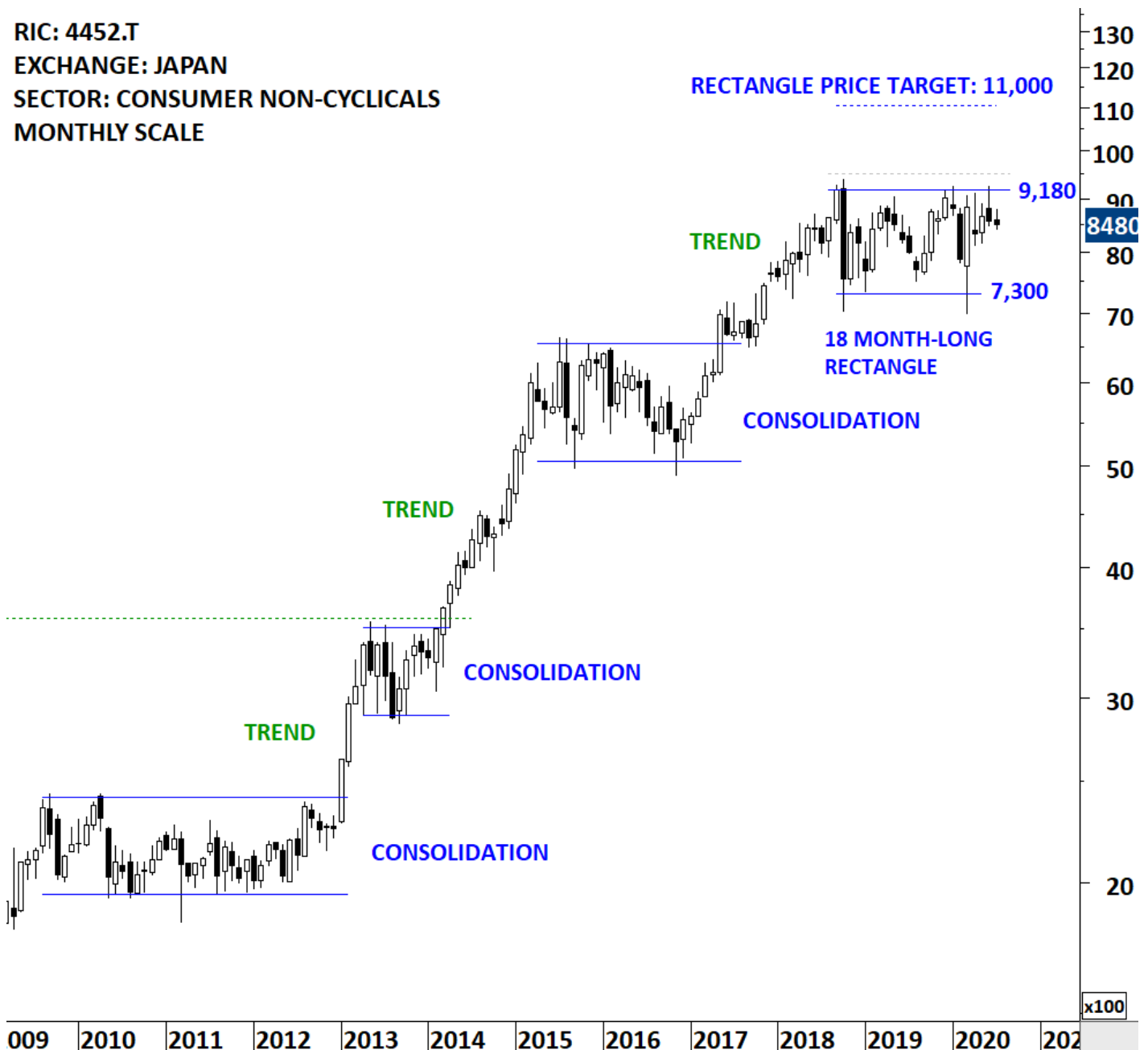
**RIC: 600362.SS**  
**EXCHANGE: CHINA**  
**SECTOR: BASIC MATERIALS**  
**MONTHLY SCALE**



## KAO CORP (4452.T)

Kao Corporation is a Japan-based company engaged in the manufacture and sale of consumer products and chemical products. The stock is listed on the Tokyo Stock Exchange. Price chart formed an 18 month-long rectangle with the horizontal boundary acting as strong resistance at 9,180.00 levels. The horizontal boundary was tested several times over the course of the chart pattern. A daily close above 9,500.0 levels will confirm the breakout from the 18 month-long rectangle with the possible chart pattern price target of 11,000.0 levels. Please note that this stock has a tendency to form well-defined lengthy consolidation ranges that are followed by strong trend periods. Breakout from the latest consolidation can prove to be one of those trend periods. ([Learn more: Video Tutorial](#))

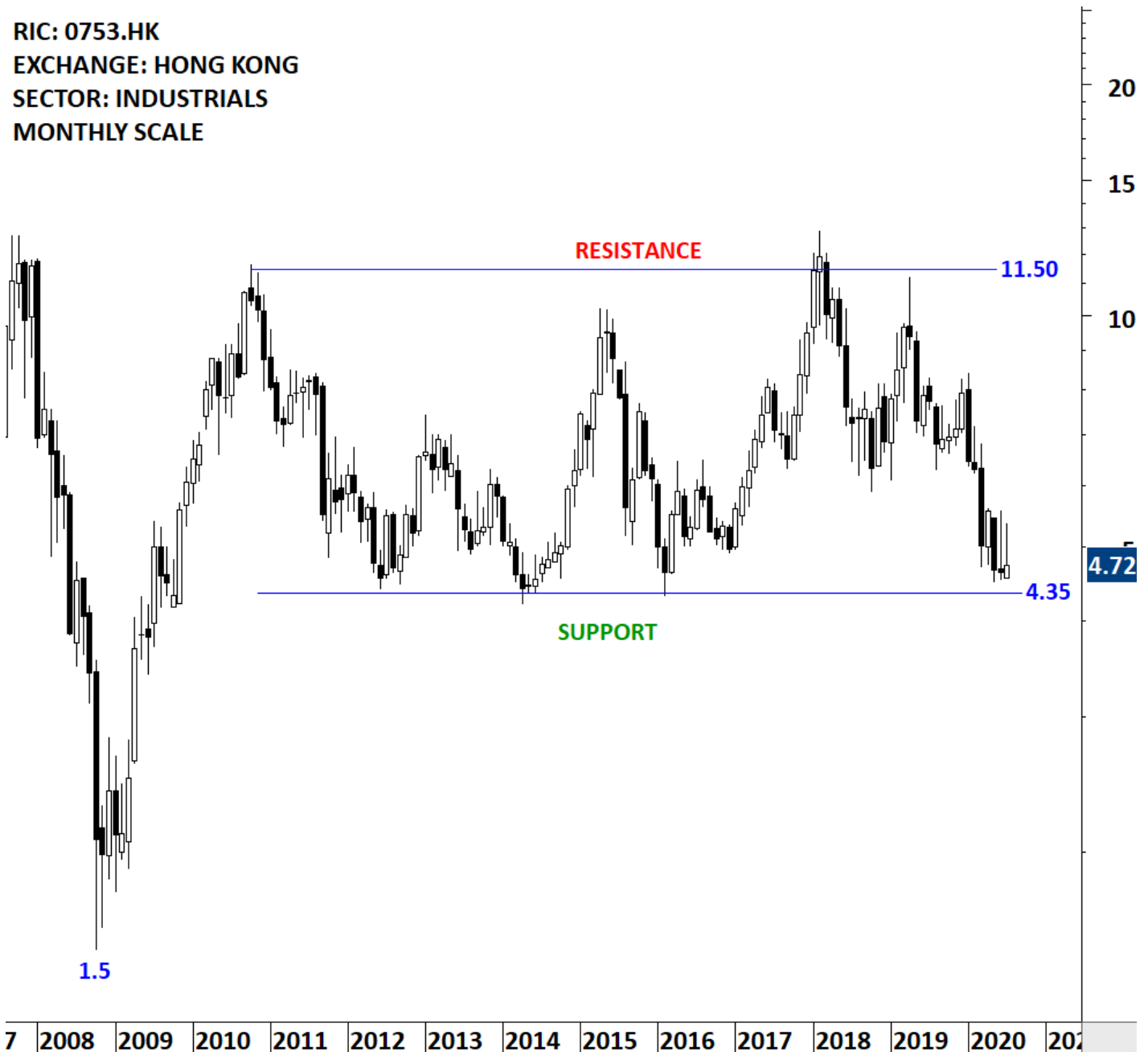
**RIC: 4452.T**  
**EXCHANGE: JAPAN**  
**SECTOR: CONSUMER NON-CYCLICALS**  
**MONTHLY SCALE**



### AIR CHINA LTD (0753.HK)

Air China Limited is a China-based company principally engaged in the provision of air passenger transportation, freight transportation, postal transportation and maintenance services in Mainland China, Hong Kong, Macau and foreign regions. The Company is also engaged in domestic and international business aviation businesses, plane business, aircraft maintenance, airlines business agents, ground and air express services related to main businesses, duty free on boards, retail business on boards and aviation accident insurance sales agents business. The stock is listed on the Hong Kong Stock Exchange. Price chart formed a decade-long rectangle with the horizontal boundary acting as strong support at 4.35 levels. The horizontal boundary was tested several times over the course of the chart pattern. Given the Global pandemic and its effects, it is hard to justify a long trade idea in the airline industry. However, the levels Air China is testing can offer a long-term opportunity. ([Learn more: Support & Resistance](#))

**RIC: 0753.HK**  
**EXCHANGE: HONG KONG**  
**SECTOR: INDUSTRIALS**  
**MONTHLY SCALE**



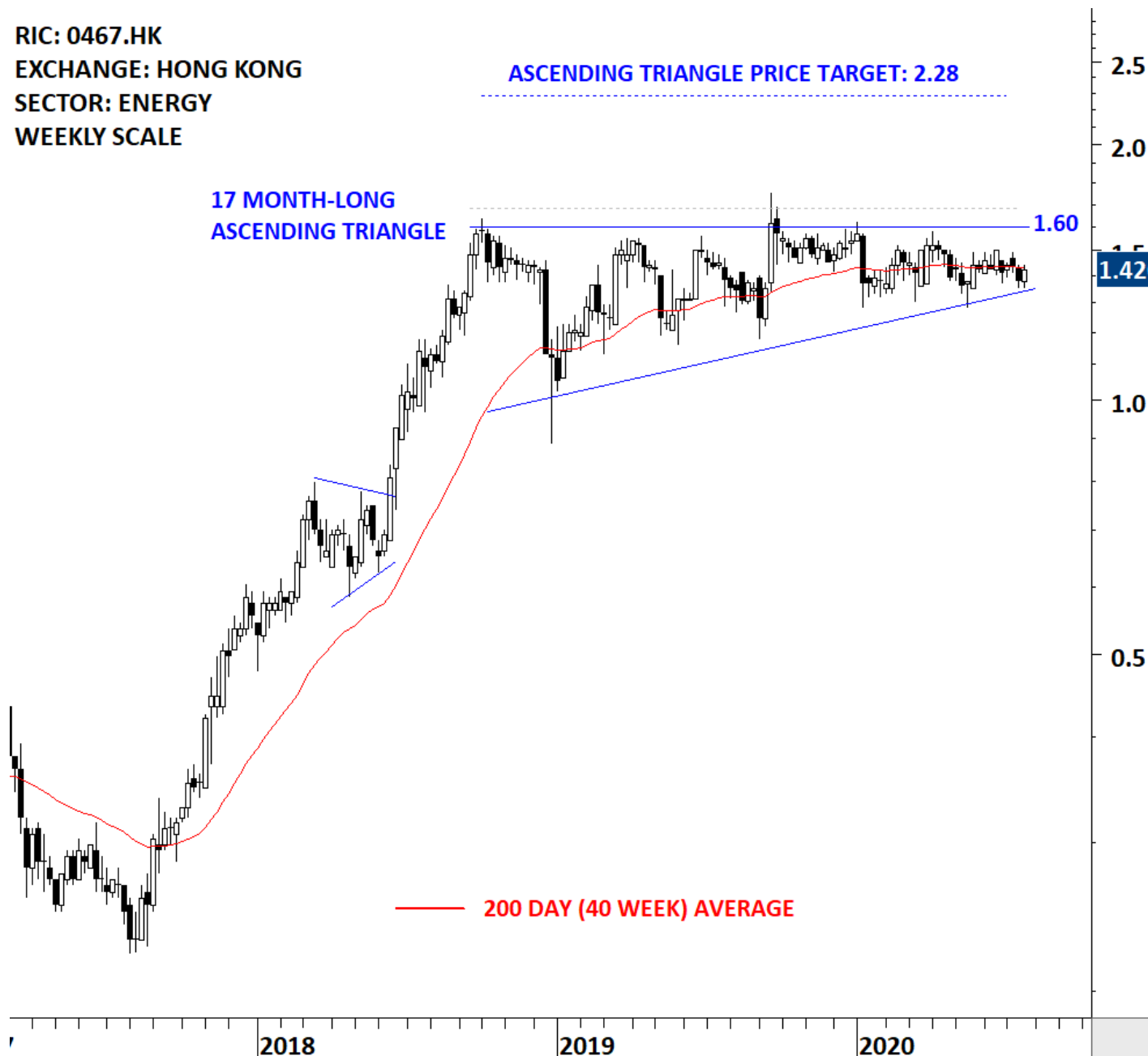
**UNITED ENERGY GROUP LTD (0467.HK)**

UNITED ENERGY GROUP LIMITED is a Hong Kong-based investment holding company principally engaged in petroleum and natural gas businesses. The stock is listed on the Hong Kong Stock Exchange. Price chart formed a 17 month-long ascending triangle with the horizontal boundary acting as strong resistance at 1.60 levels. The horizontal boundary was tested several times over the course of the chart pattern. A daily close above 1.68 levels will confirm the breakout from the 17 month-long ascending triangle with the possible chart pattern price target of 2.28 levels.

**RIC: 0467.HK**  
**EXCHANGE: HONG KONG**  
**SECTOR: ENERGY**  
**WEEKLY SCALE**

**ASCENDING TRIANGLE PRICE TARGET: 2.28**

**17 MONTH-LONG  
ASCENDING TRIANGLE**



**2 Year Weekly Correlation Matrix ([Learn More about Correlation Matrix](#))**

	ACWI.O	EEM	FM	QTS.N	COHU.OQ	MO.N	PSPN.S	DNORD.CO	FPEG_p.DE	SANKO.IS	REDY.NS	9531.T
ACWI.O	1	0.8731	0.8011	0.657	0.7477	0.5856	0.5856	0.4264	0.2995	0.5201	0.369	0.2659
EEM	0.8731	1	0.7375	0.4824	0.6866	0.4058	0.4498	0.4091	0.3133	0.4139	0.319	0.1344
FM	0.8011	0.7375	1	0.4839	0.622	0.4329	0.6432	0.3732	0.2141	0.6045	0.3123	0.1246
QTS.N	0.657	0.4824	0.4839	1	0.3647	0.4249	0.4366	0.2088	-0.0738	0.3322	0.2613	0.2961
COHU.OQ	0.7477	0.6866	0.622	0.3647	1	0.4124	0.468	0.2332	0.2715	0.4421	0.2494	-0.0016
MO.N	0.5856	0.4058	0.4329	0.4249	0.4124	1	0.4421	0.2456	0.076	0.3172	0.2647	0.1737
PSPN.S	0.5856	0.4498	0.6432	0.4366	0.468	0.4421	1	0.1764	0.2361	0.4223	0.3463	0.0551
DNORD.CO	0.4264	0.4091	0.3732	0.2088	0.2332	0.2456	0.1764	1	0.3753	0.3137	0.3353	0.0979
FPEG_p.DE	0.2995	0.3133	0.2141	-0.0738	0.2715	0.076	0.2361	0.3753	1	0.0717	0.3399	0.1191
SANKO.IS	0.5201	0.4139	0.6045	0.3322	0.4421	0.3172	0.4223	0.3137	0.0717	1	0.27	0.1422
REDY.NS	0.369	0.319	0.3123	0.2613	0.2494	0.2647	0.3463	0.3353	0.3399	0.27	1	0.061
9531.T	0.2659	0.1344	0.1246	0.2961	-0.0016	0.1737	0.0551	0.0979	0.1191	0.1422	0.061	1